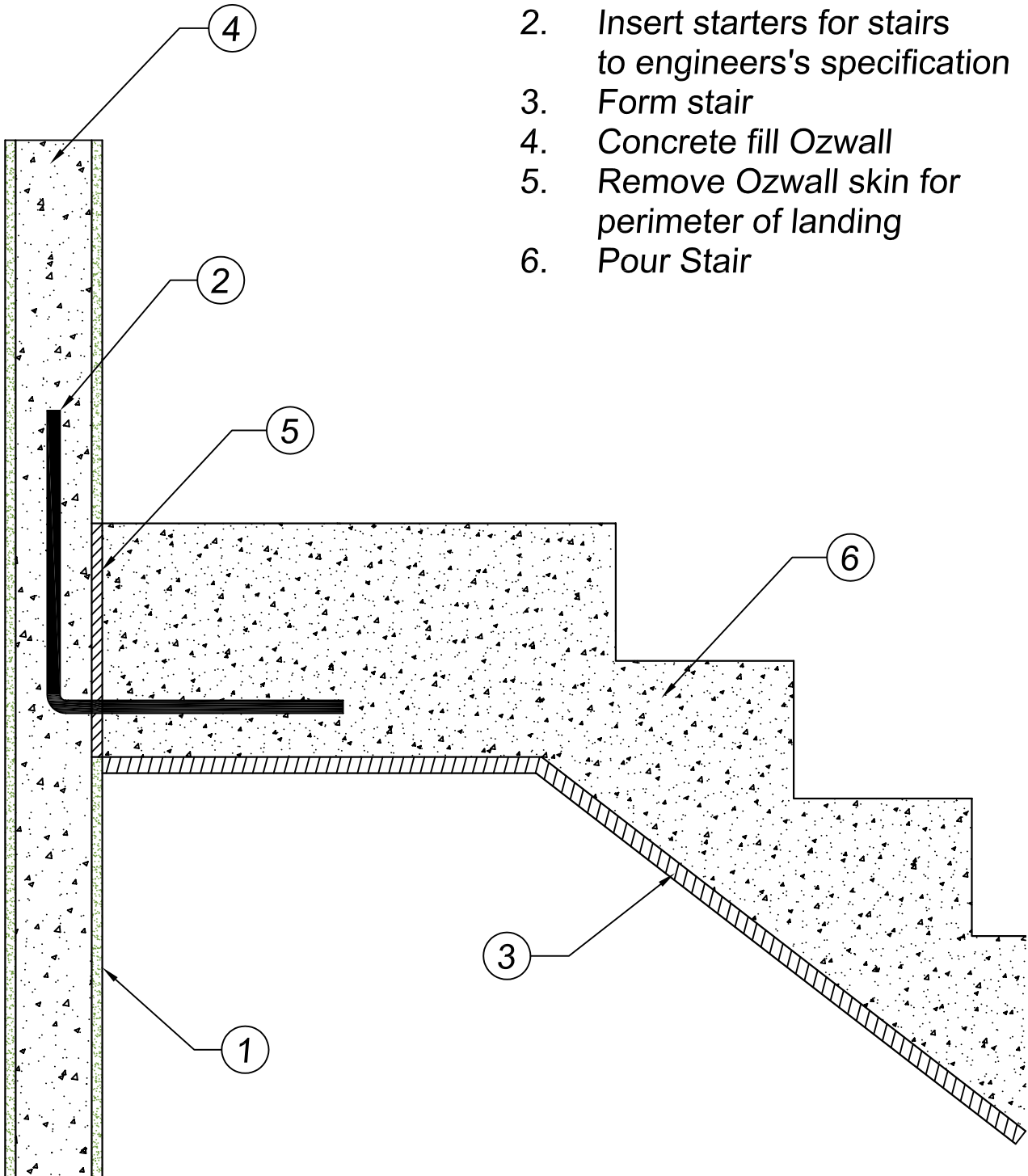


1. Erect Ozwall
2. Insert starters for stairs to engineers's specification
3. Form stair
4. Concrete fill Ozwall
5. Remove Ozwall skin for perimeter of landing
6. Pour Stair



OZWALL Pty Ltd

Junction of Stair  
Landing to Ozwall

Date:	Issue:	Drawing No:
08/05	A	OZ-SK 6